



Advancing strategic planning of NBS in Europe - Metropolia Krakowska case study



Svea Busse

Advancing strategic planning of NBS in Europe

Metropolia Krakowska case study

21 September 2022

Organizers: Johannes Langemeyer, Agnieszka Arabas, Svea Busse

Supported by: Tomasz Bergier, Sara Maestre



Strategic Planning of NBS



□ Borders of municipalities

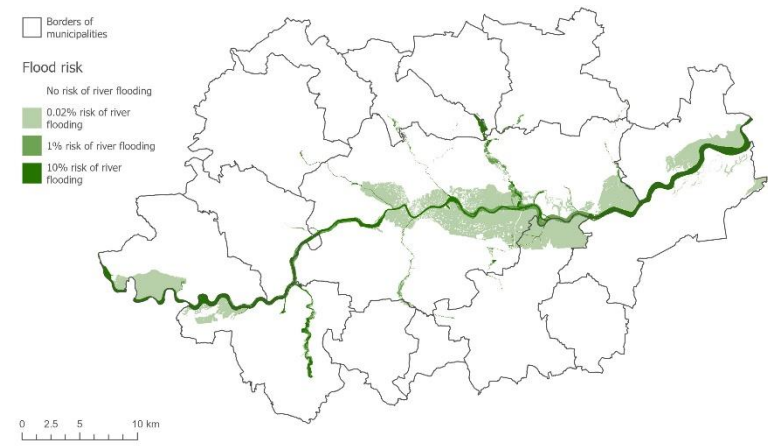


Metropola Krakowska

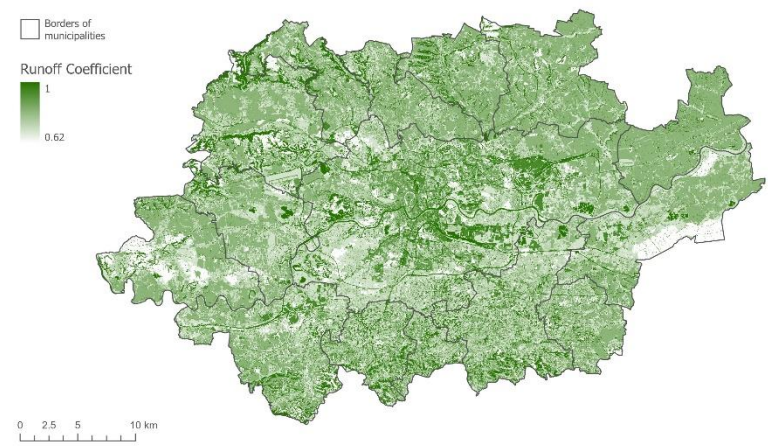


Vulnerability

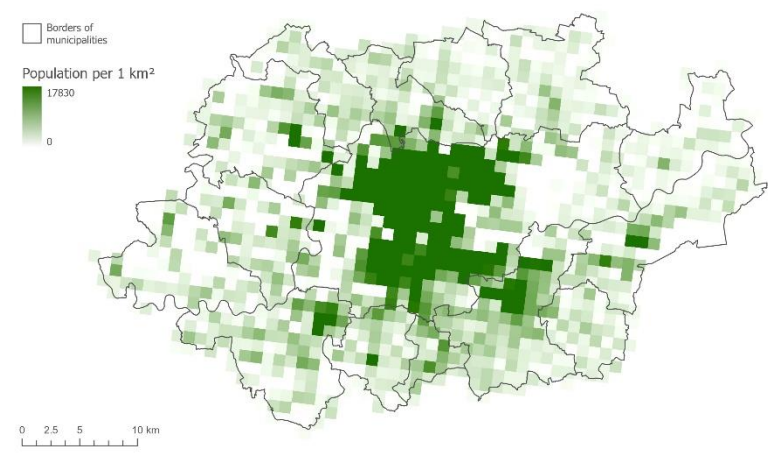
Fluvial flood risk



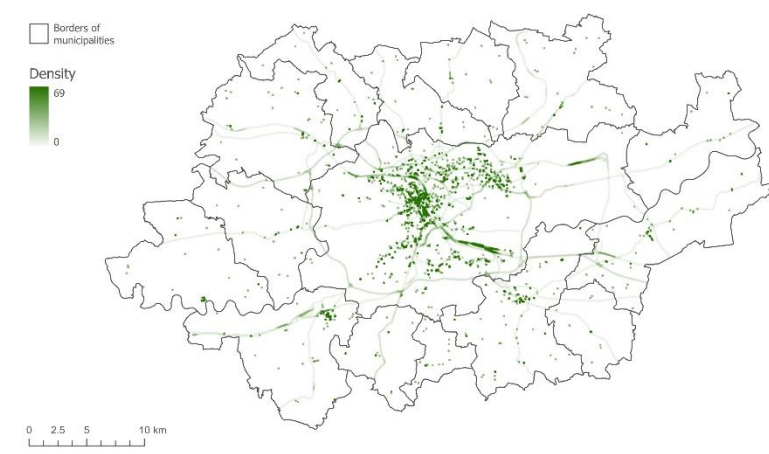
Runoff coefficient



Population density



Critical infrastructure

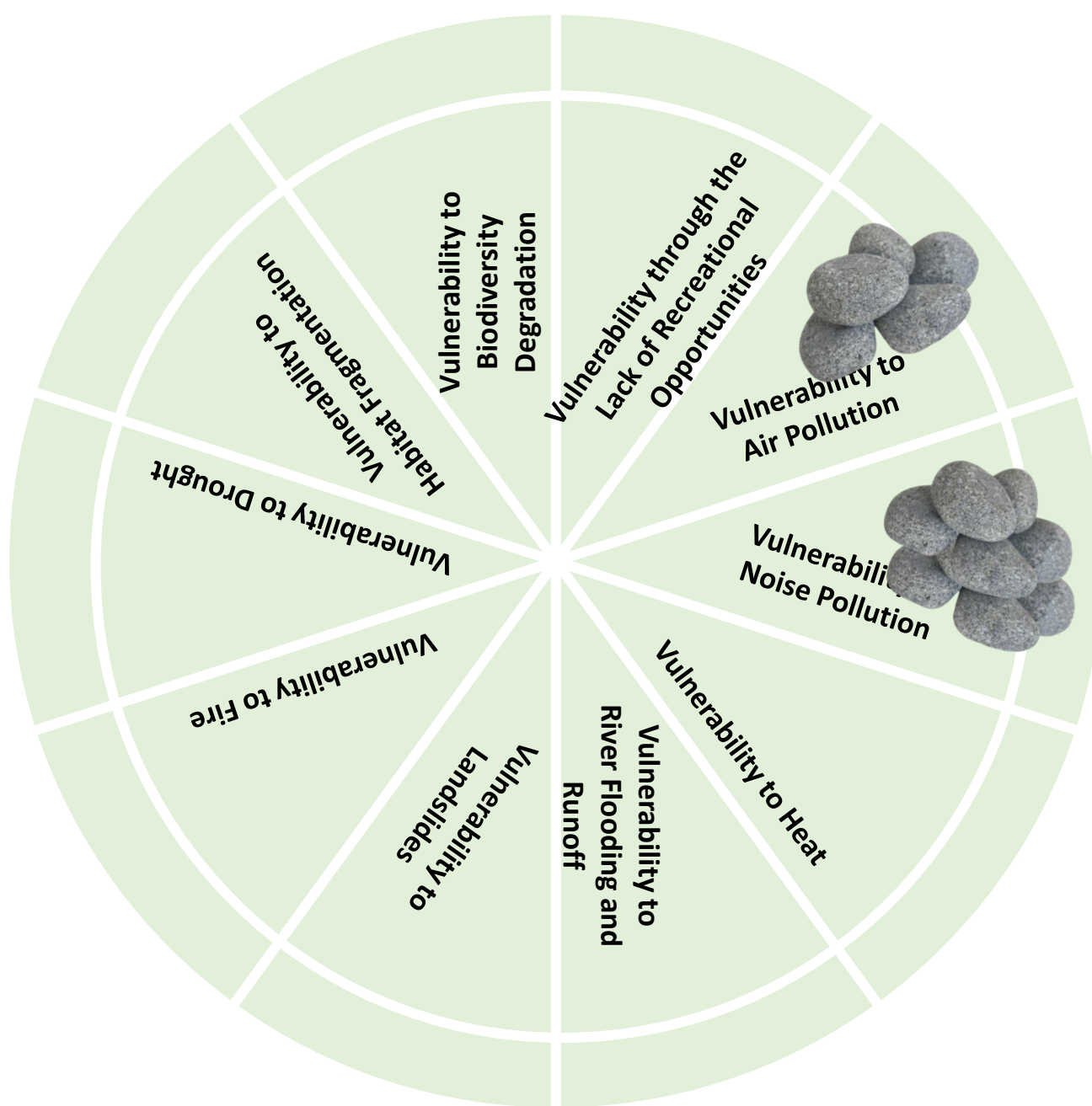




Criteria Weighting

Please distribute 100 pebbles among the 10 criteria

Pebble-Distribution Methods





Responsible researcher:

PHD Johannes Langemeyer

Institute of Environmental Science and Technology (ICTA)
Universitat Autònoma de Barcelona
Edifici Z (ICTA-ICP) • Carrer de les Columnes s/n • Office Z/123
Campus de la UAB • 08193 Bellaterra (Cerdanyola del Vallès)
Barcelona, Spain

ES +34 935868634

johannes.langemeyer@uab.cat

Barcelona Urban Environmental Justice Lab

<http://bcnuej.org>

<http://ictaweb.uab.cat>

