



OpenNESS workshop

'Ecosystem services and EU regulatory frameworks: Experiences from real-world decision-making', 7 February 2017

HOW CAN OPPLA HELP?

Rob Wolters, General manager
Oppla EEIG



What is Oppla?

 opppla

A virtual hub where you will find the latest thinking on nature-based solutions



Contributing partners

- Joint activity between OpenNESS and OPERAs
- Funded by the European Commission FP7 Programme
- Over 60 universities, research institutes, agencies and businesses





What is Oppla's purpose?

The purpose of Oppla is simple:



to help you **collaborate,**
innovate and **communicate**



Oppla is a community

Oppla is a **community** where you can connect and collaborate with others from across Europe



And soon...



...a global community

Community

Displaying 1 - 20 of 1008

Sonigitu Ekpe



Cross River State
Department of Forestry,
Biodiversity, Marine
Protection and
Conservation
Nigeria

[MORE](#)

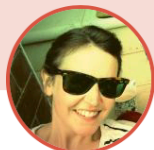
Claudia Carvalho-Santos



Cibio/InBIO, University of
Porto
Portugal

[MORE](#)

Rose Galsworthy



Countryside
UK

[MORE](#)

Klara Johanna Winkler



Carl von Ossietzky
Universität Oldenburg
Germany

[MORE](#)

Florence GUTH



EPAMARNE
France

[MORE](#)

Michele Adolphe



Agorah
France

[MORE](#)

FIND MY MATCH

SEARCH

enter search terms:



Ecosystems



Implementation



Methods



Regions



Topics



Ecosystems



Implementation



Methods



Regions



Topics



Sort by





Oppla is a marketplace

Oppla is also
a marketplace

A place where
ideas can grow



PRODUCTS



FILTERS



enter search terms:



OpenNESS Synthesis paper: Link between biodiversity and ecosystem services

As was stated in the OpenNESS proposal, the quantitative relationship between biodiversity, ecosystem functioning and ecosystem services is still poorly understood. It is still unclear under what circumstances an emphasis on ecosystem services in planning and decision making is (conceptually and

English

€0.00

MORE



KEYWORDS

Choose keywords from the menus below and hit apply...

Ecosystems



Implementation



Methods



Regions



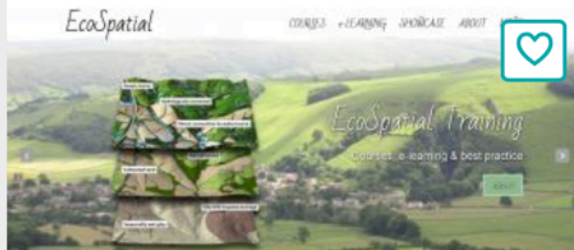
Topics



APPLY

RESET

+ SHARE / ADD PRODUCT



GIS Training & EcoSpatial E-learning

To meet the growing demand for subject-specific and relevant GIS training courses Westcountry Rivers Trust have developed a series of intensive GIS short-courses specifically tailored to develop and disseminate best practice and technical GIS skills in the use of GIS, in practitioners engaged in

English

€0.00

MORE



GIS Training & EcoSpatial E-learning

View

Edit



GIS Training & EcoSpatial E-learning

To meet the growing demand for subject-specific and relevant GIS training courses Westcountry Rivers Trust have developed a series of intensive GIS short-courses specifically tailored to develop and disseminate best practice and technical GIS skills in the use of GIS, in practitioners engaged in catchment management planning, landscape

GET



License:

Open source (specify licence type)

Price:

€0.00

Development stage:

Full, working product

Publication date:

12 September 2016

Primary language:

English

Professional indemnity:

None

Implementation time:

Less than one day



Oppla is an enquiry service

Simply ask a question and receive answers...



Ask Oppla to help you find the information you need...

GET HELP FROM EXPERTS

**ASK A
QUESTION**





Oppla features case studies...

Case study finder

Displaying 1 - 46 of 46



Leaflet | OSM Mapnik

SEARCH

SCALE

- Global
- Continental
- Sub-continental
- National
- Subnational
- Local

APPLY

RESET



...and decision-support tools (in development)

The screenshot shows the Oppla website interface. At the top, there is a navigation bar with links for HOME, GET STARTED, ASK OPPLA, WHAT IS OPPLA, EVENTS, NEWS, and CONTACT. A search bar and buttons for ASK and LOG IN are also present. The main content area features a large teal graphic with a water drop in the center, surrounded by five numbered steps (1-5) connected by arrows in a circular path. A red dashed box highlights this graphic and the accompanying text: "Use this tool to break down the ecosystem service assessment process into a logical sequence of steps. Each step provides you with the objective, the expected outcome as well as resources, illustrative real world cases and tools & methods." Below this, a teal callout box lists the five steps: 1. Setting the scene, 2. Identification of ESS, 3. Bio-physical assessment, 4. Valuation, and 5. Put into practice. The bottom of the page includes a footer with the European Commission logo and text: "by the European Commission under the (including climate change) Theme of the framework Programme for Research and Technical Development."

oppla

HOME GET STARTED ASK OPPLA WHAT IS OPPLA EVENTS NEWS CONTACT

Collaborate • Innovate

Sign up to become a part of this exciting new community!

JOIN

You'll receive updates about Oppla as it develops. You'll also be given opportunity to contribute your own ideas and collaborate with other members.

Ask Oppla Ask a question and receive answers from the community...

Case studies Learn from others that have dealt with a similar problem in a similar setting

Guidance Break down the ESS assessment process in a logical sequence

oppla

enter search terms: [SEARCH]

ASK LOG IN

HOME GET STARTED ASK OPPLA WHAT IS OPPLA EVENTS NEWS CONTACT

Use this tool to break down the ecosystem service assessment process into a logical sequence of steps.

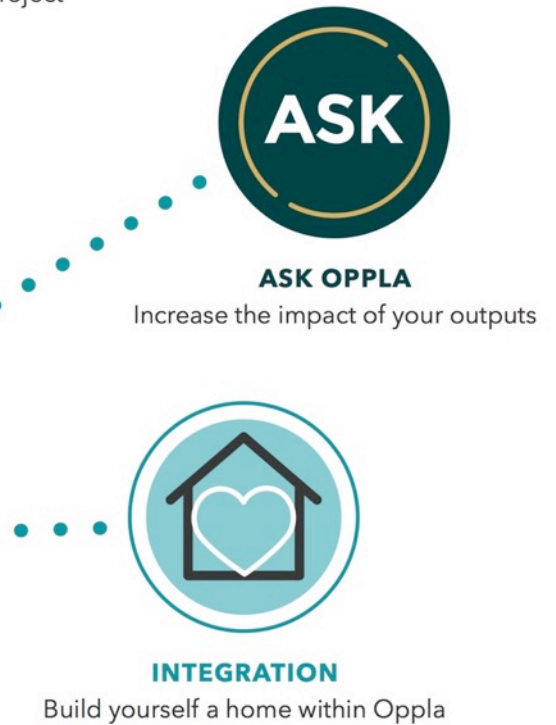
Each step provides you with the objective, the expected outcome as well as resources, illustrative real world cases and tools & methods.

START

1. Setting the scene
2. Identification of ESS
3. Bio-physical assessment
4. Valuation
5. Put into practice

by the European Commission under the (including climate change) Theme of the framework Programme for Research and Technical Development.

Your project, platform or organisation

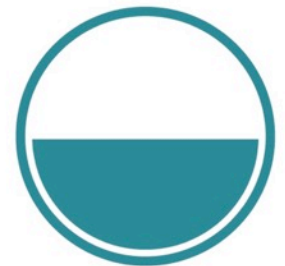
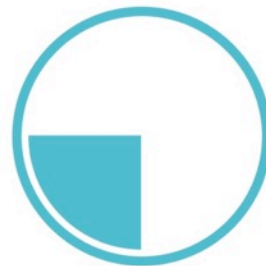


Oppla community



Oppla in numbers

- **1000+** members of the Oppla community
- **200+** completed products in the Marketplace
- **10,000+** unique visits to the Oppla website since launch
- **500+** Twitter followers
- **100+** projects, networks organisations in conversation with us...





Strategic links

- Actively supported by the European Commission and described as: *"THE hub for nature-based solutions"*
- Oppla web-infrastructure being used to develop the IPBES Catalogue of Policy Support Tools & Methodologies (launching 2017)





Strategic links (2)

- Oppla has also links with more than 100 projects, platforms and networks, such as European Environment Agency, BES-NET, LIFE WATCH, IUCN, ThinkNature, EKLIPSE, IUCN, and numerous (other) Horizon 2020 projects.

Those strategic links offers a ready-made framework for engagement and ensuring synergies of scale and scope.



Oppla's legal entity

- European Economic Interest Grouping (EEIG)
- Non-profit entity
- Established 20/10/16 for indefinite duration
- Based in the Netherlands, formally created by ECNC and Countryside on behalf of OpenNESS and Opera community
- EEIG and its business plan allows Oppla to generate income for financial sustainability and future development





Oppla governance

Decisions

Management Board

Guidance & operations

Strategy Group

Coordination Team

Crowd-sourced ideas and feedback

Oppla Assembly



Oppla business model

- **Freemium service:** free at point of use with optional premium services
- **Research projects:** Oppla legal entity joining project consortia as a partner / sub-contractor
- **Information repository:** storing and promoting the outputs of projects (data, software, documents, etc)
- **Events and training:** workshops, conferences and tailor-made training





Oppla for policy-implementation – key advantages

The key advantages of Oppla for “policy” are:

- (1) **Cost and time-efficiency.** Oppla provides access to a very wide stakeholder community, and *interface between science and policy*, and can develop tailor-made approaches;
- (2) **Synergetic links** with other relevant platforms, ensuring maximum effectiveness and outreach for policy-makers;
- 3) **Multi-stakeholder network and approaches**, from science to businesses, allowing balanced inputs;
- 4) **state of the art IT and communication** technology and approaches.



Oppla for policy-implementation (1)

Oppla can support in various ways:

- With **dedicated policy-oriented` microsities`** within the Oppla hub: autonomous yet benefiting from integration with Oppla's online facilities and growing community;
- With **“Decision-making support tools”**, breaking down the ecosystem services assessment process in logical steps;
- With **“Multimedia content”**: videos and audio podcasts on key topics relating to each relevant policy area. Content will be highly accessible and designed to engage wider audiences, using techniques such as animation, visualisation and infographics to convey complex messages with clarity;
- **With topical webinars**: sharing state-of-the-art research and practical experiences of tools/models relevant to policy-making and implementation



Oppla and policy-implementation (2)

And with ..

- **Answering policy-questions**, including “quick and dirty” ones, drawing from expertise and insights from a range of disciplines and perspectives (science, policy, business, societal, etc);
- **Guidance and policy notes**: producing policy relevant (summary) inputs in response to both current and emerging policy needs, drawing upon the “think tank” expertise of Oppla EEIG, scientific/research network and other stakeholders;
- **Social media consultations and outreach** to wide audiences.

Natural capital • Ecosystem services • Nature-based solutions

Sign up to become part of this exciting new community!

[JOIN !\[\]\(b4eeff342f60cc7bcd67d869b4fedca2_img.jpg\)](#)

You'll receive updates about Oppla as it develops. You'll also be given opportunity to contribute your own ideas and network with other members.

