

NN Labs



A Citizen Science app for mapping river barriers & freshwater features



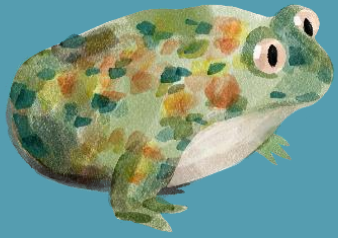
Carlos Garcia de Leaniz, Swansea University &
Blue Rivers Foundation | c.garciadeleaniz@swansea.ac.uk



What is the idea about?



- AMBER used a Citizen Science app to map river barriers
- We will adapt the app to map other freshwater features & stressors of biodiversity using open code
- We'll share the results & promote CS data across cities and regions



What are the main objectives?

- Update the barrier tracker app to include lateral barriers & quality of vegetation
- Develop a generic, open source mapping platform adaptable to other needs (e.g. mapping ponds, pollutant sources or particular species)



How would it be developed?

- Wish list develop via consultation with potential users
- Focus groups
- Extensive communication
- Dissemination event



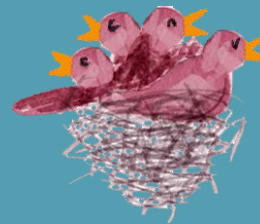
What are the concrete outputs?

- An upgraded, improved app
- A generic mapping platform
- A blue print for mapping freshwater biodiversity using citizen science



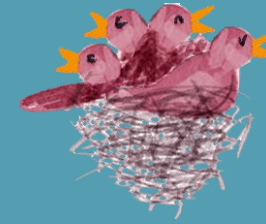
Who is already involved?

- Carlos Garcia de Leaniz, Blue Rivers Foundation, TF1
- Gilles Segura, Blue Rivers Foundation, TF1
- Polona Pengal, REVIVO, DRYver, TF1
- Eva Horvat, REVIVO, DRYver, TF1
- Sandra Brucet, Ponderful
- Àlex López, Ponderful





Other collaborations?



We are already collaborating with

RIWET, Danube LifeLines; Danube4All; LIFE FOR RIVERS;
RIVERLIFE, AMBER, DRYvER

We would like to connect with:

Biodiversa + TF

NN Hubs (to promote the use of the app)

NGOs, other organisations working in water (RAMSAR,
IUCN,) that can promote the uptake of the app

EC, JRC, EEA.

National and regional water bodies



How and when can other TFs members be involved?

Water Projects of NN Cluster

At least: Connecting Nature, EcoAdvance, MERLIN, NaturaConnect, REST-COAST, UNalAb, WaterLANDS, SpongeWorks, NATURE-DEMO, GENESIS, SpongeScapes, SpongeBoost, SpongeWORKS, NATALIE, ARCADIA

Contact us:

c.garciadeleaniz@swansea.ac.uk



Stages of the proposal

