

NN Labs

Selected idea



AIM-NBS

Advancing Impact Measurement
of Nature-based Solutions

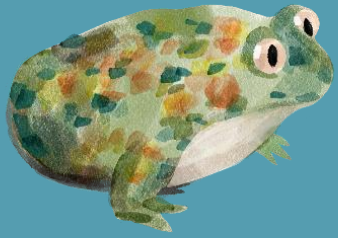
Marcel Cardinali, TH OWL, TF 2
marcel.cardinali@th-owl.de



What is the idea about?



Advancing **Impact Assessment** of **Nature-based Solutions**



What are the main objectives?

Systematically collect insights from EU-funded projects to understand **bottlenecks, challenges, and successes** in impact evaluation

Beyond our personal experience...



How would it be developed?

- Phase 1:** Develop and distribute the **survey** to EU projects; begin **data collection**.
- Phase 2:** **Analyse responses**; individual follow-ups, host a **team workshop** to get a consensus on findings and key outputs.
- Phase 3:** Craft & disseminate a **policy brief**, finalise and submit an **open-access publication**



What are the concrete outputs?

- Organised **repository of challenges, successes, and recommendations.**
- **Open-access publication** highlighting key lessons for improving NBS impact methodologies.
- **Policy brief** summarising findings.



Who is already involved?

- **Marcel Cardinali**, TH OWL (TF2)
- Stuart Connop, UEL (TF2)
- Chiara Baldacchini, Uni Tuscia (TF1/2)
- Carolina Cantergiani, Tecnalia (TF1/2)
- Angieszka Olszewska-Guizzo,
Neurolandscapes (TF2)





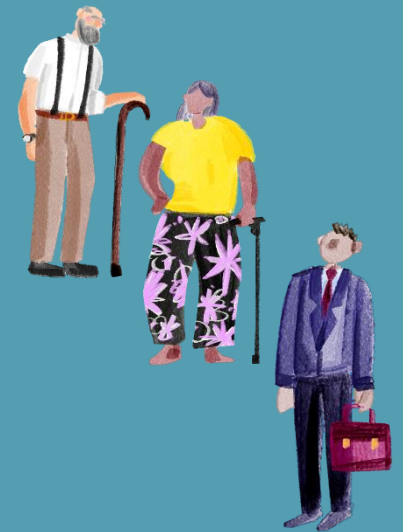
Other collaborations?

- **TF1** to ensure the survey design **aligns with ongoing efforts on standardization.**
- **TF1/2** invite **broad participation** by opening the survey development process
- **Biodiversa+ TF** and others working on NbS
- **MIP4ADAPT** – links to NbS projects of the Mission on Adaptation to Climate Change
- **PI's** of the EU projects working on NbS to disseminate survey



How and when can other TF members be involved?

- **TF1/2 members** to ensure the survey design aligns with ongoing efforts on standardization.
- Invite broad participation by opening the survey development process to **all interested TF members**
- We will **share preliminary insights and results** within TF meetings and reach out by email when necessary
- If you want to be involved, write to Marcel Cardinali (marcel.cardinali@th-owl.de)



Stages of the proposal



